
CAE PERFORMANCE PRODUCTS PTY/LTD

Pyrenees Hwy Chewton, VIC. 3450
Telephone : (03) 5472 1442 - Fax (03) 5472 4111

Model A Ford Cable Wiper Kit Component List

Wiper Motor Assembly with Flexible Drive Cable (100 Deg Sweep, 900mm or 2200mm Flexible Cable. & Bundy Tubes
Wiper Mounting Bracket, U Clamp, Rubber.
Two Wheel boxes and Spacers
Wiring Loom, Switch and In Line Fuse.
Customer Instruction Sheet

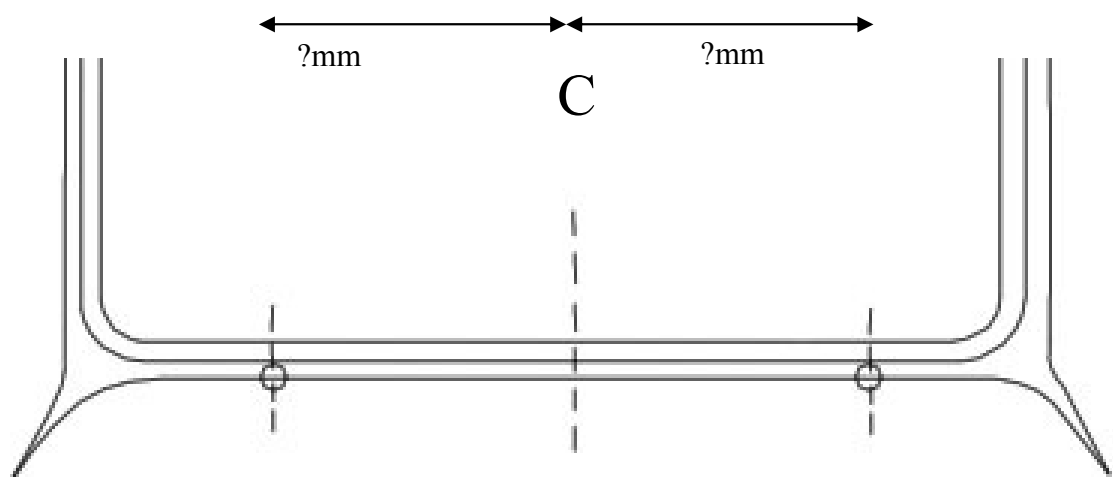
Bulk Tubing used is standard 5/16 Steel Brake tubing. (Bundy Tubing) Do not kink these tubes as serious damage to the wiper motor will occur. **Kink or dented tube must be replaced.** Some gentle bending can be done in a standard tube bender tool to give a better fitment to the cable drive.

Fitting Instructions

Cable Driven Wiper Kit

- 1 Location of the Wheel boxes.-- Drill 5/8 clearance hole at the correct angle to give the pressure on the blades. (Should be as close to 90 degrees to the windscreen glass as possible.)

Locate And mark the centre of cowl windscreen opening width, measure out each side of centre, in the middle of lower radius as shown. Use your arms and blades to give you the desired Ark movement, this will give you the position of the wheel boxes



- 2 Locate the position where you will mount the Wiper Motor. You can drill more holes and shorten the supplied Mounting Bracket, and mount the wiper motor with its clamp. Grease the flex cable with suitable grease and hand thread the first wheel box on to and up to the wiper motor, attach the tube to the Wiper motor via the Brass nut only hand tighten at this stage. Note the Passenger side wheel box must have the Bundy tube and Flex cable running on the Top side of the wheel gear. The Drivers side wheel box has the

CAE PERFORMANCE PRODUCTS PTY/LTD

Pyrenees Hwy Chewton, VIC. 3450
Telephone : (03) 5472 1442 - Fax (03) 5472 4111

tube and flex cable running on the bottom side of its gear. (Reverse these position if mounting on the Drivers side

- 3 Cut to suitable length the Bundy Tubes. Thread the Centre tube between each wheel box and the end tube to the RH Side wheel box, making sure the tube flares fit into the wheel box slots provided. It may be necessary to gently bend the tube slightly to allow correct fitment. Once you have the tubes fitted then mount the Drivers side wheel box. Tighten all wheel box plates and the brass nut at this time.
DO NOT STRAIN THE WIPER FIRST TUBE IN ANY WAY. (If the Tubes get any kinks or dents in them they must be replaced or the wiper motor can be seriously damaged.)
- 4 Fit 2-speed switch in appropriate hole and install wiring loom supplied.
- 5 Connect Brown wire to suitable earth location on the vehicle
- 6 Connect Red feed wire through Fuse supplied to suitable Ignition Feed Wire on Ignition Switch of vehicle. Activate the wiper motor and check for smoothness of operation. Retest wiper operation. Make sure the Bundy tubes allow for a quiet operation.
- 7 Fit original arm or new wiper arm and blades in the park position. It is necessary to cut the Arms and Blades to suit the Windscreen opening you have
- 8
- 9 Activate power and check wipers for sweep and all body clearances.

WINDSCREEN WIPERS

Windscreen Wiper Systems ----- Some useful helps.

1. Motor

This is a two speed wiper motor, with self parking.

Make sure you use the correct bracket and strap with the rubber covering, and the motor is not touching any part of the vehicle body to eliminate noise.

2. Drive Gear

When the new motor arrives there is a threaded brass ferrule to take the first drive tube. There are a couple of gears to fit this motor with the number 100 or 125 which is stamped on the top

CAE PERFORMANCE PRODUCTS PTY/LTD

Pyrenees Hwy Chewton, VIC. 3450
Telephone : (03) 5472 1442 - Fax (03) 5472 4111

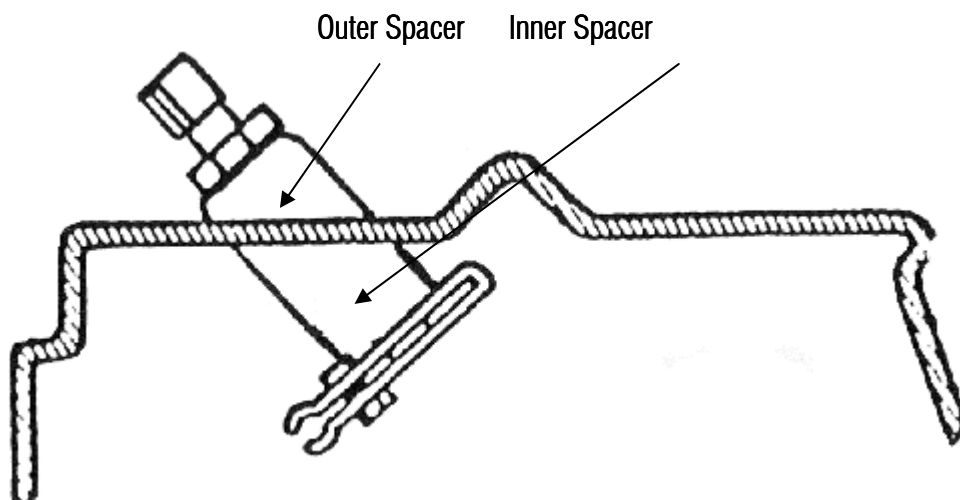
round plate. This is giving the least amount of travel to the rack and wiper arms.
On the top of the gear plate where the number is stamped there is a drive peg welded in position. This is the only item which changes position throughout all the gears (e.g. welded in different positions on the top plate.). Obviously if this peg was welded to the centre of the plate there would be no travel at all, so the further the peg is positioned to the outer edge of the plate the more travel you get. With each gear come 2 washers and a circlip retains the gear in to the motor, always pack with grease in the gear area before refitting the top cover.

3. Wheel Boxes

The wheel box size is 32 teeth on the inner drive wheel and the ideal length of shaft from the inner face to the end of the splines is 2.5 inches. This allows for the thickness of material on fibreglass cars as the first spacer can be cut down in size allowing for varying thicknesses through the bulkhead where the wheel boxes fit.

If the car has a split screen then it is quite easy to fit what was called the clapped hands system. This is by turning one of the wheel boxes through 180 degrees.

Wheelbox showing inner and outer spacer which will require some radius work to suit individual shaped cowls



CAE PERFORMANCE PRODUCTS PTY/LTD

Pyrenees Hwy Chewton, VIC. 3450
Telephone : (03) 5472 1442 - Fax (03) 5472 4111

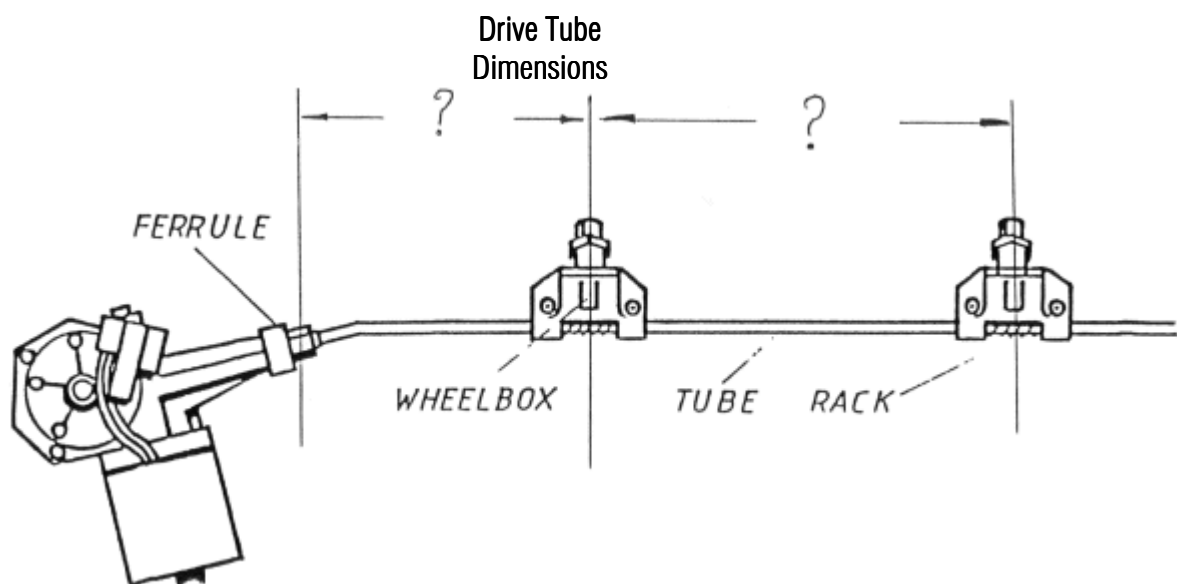
4. Drive Rack

When fitting a new system to a existing vehicle, it is advisable to fit a new drive rack as this is one of the items that wears, resulting in the wiper arms having too much play.

5. Drive or "Bundy" Tubing Sets

It is far better to use the recommended wiper tubing (5/16 Steel Brake Tube) than to use copper tube as this can be noisy and wears very quickly on any bends. Wear of the drive tube, sharp bends or kinks in the tube, causes friction that can lead to the motor burning out.

Bundy tube sets can be made up providing you give the supplier 2 dimensions. The first is the distance from the motor to the centre of the first wheel box hole, and the second the distance between the wheel box hole centres through the bulkhead. Obviously if there is a 3 wiper system then there is another dimension needed. Try to avoid sharp bends in the tubing, If you have to bend the bundy tube, an easy way to form the shape is to insert the drive rack into the tube before bending. This will keep the tube the correct diameter on any of the bends (very much like a plumber bends copper piping by inserting the spring). Always grease the rack liberally before inserting into the bundy tube.



The above diagram is for self parking to be either on the left or the right sides of the windscreen. To have center parking one wheel box is fitted with bundy tubing running to the top of the wheel box. I.E. The wheel box is fitted upside down I.E turned 180 degrees. If the Wiper motor is mounted on the Passenger side then the R.H. Wheelbox is the one that needs to be fitted upside down.

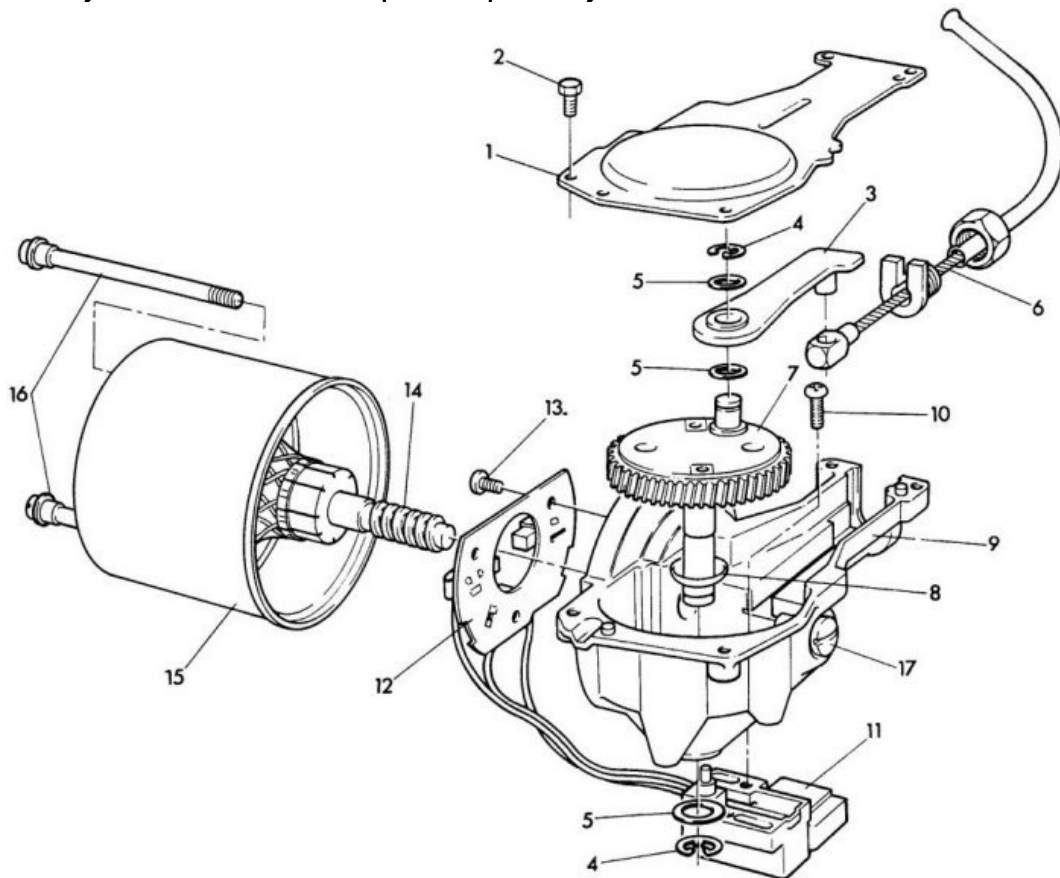
CAE PERFORMANCE PRODUCTS PTY/LTD

Pyrenees Hwy Chewton, VIC. 3450
Telephone : (03) 5472 1442 - Fax (03) 5472 4111

6. Switch

It is important that you use the correct wiper 2-speed switch as supplied. The reason for this is that when the switch is in the off position with the ignition switched on there is one connection which becomes live. This operates the parking position. If you use a non-live switch then the wipers would stop whenever the switch was switched off.

If purchasing a second hand motor make sure there are 3 wires going into the motor body. This is the way to tell if the motor is 2-speed, 1 speed only has 2 wires.



KEY:

- 1 Gearbox cover
- 2 Screw for cover
- 3 Connecting Rod
- 4 Circlip
- 5 Washers
- 6 Flexible wiper drive

- 7 Gear wheel with crankpin
- 8 Dished washer
- 9 Gearbox
- 10 Limit switch screw
- 11 Limit switch
- 12 Brush gear

- 13 Screw for brushes
- 14 Armature
- 15 Yoke
- 16 Bolts
- 17 Thrust screw



WIPER KITS

Made to your requirements

CAE PERFORMANCE PRODUCTS PTY/LTD

Pyrenees Hwy Chewton, VIC. 3450
Telephone : (03) 5472 1442 - Fax (03) 5472 4111



WASHER KIT ASSEMBLY 1.2 LITRES

Bottle & pump assembly,
mounting bracket,
push button switch,
tube & a twin Jet.



WINDSCREEN WASH PUMP

Drive Tube (correct material) Cut & flared.

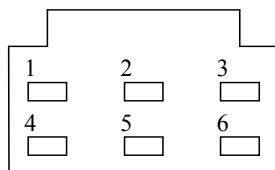
No Charge

Wheelboxes

32 tooth gear wheel.3 1/4 inch drive shaft.

Wiper Motor Pin Outs.

Plugs viewed from the front not the wiring side

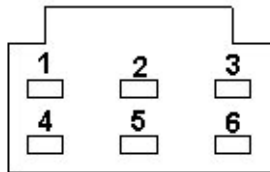


- 1) Black (Earth)
- 2) Green/Red (Low)
- 3) Blue/Red (Park)
- 4) Blank
- 5) Yellow/Blue (High)
- 6) Green/White (+ve)

CAE PERFORMANCE PRODUCTS PTY/LTD

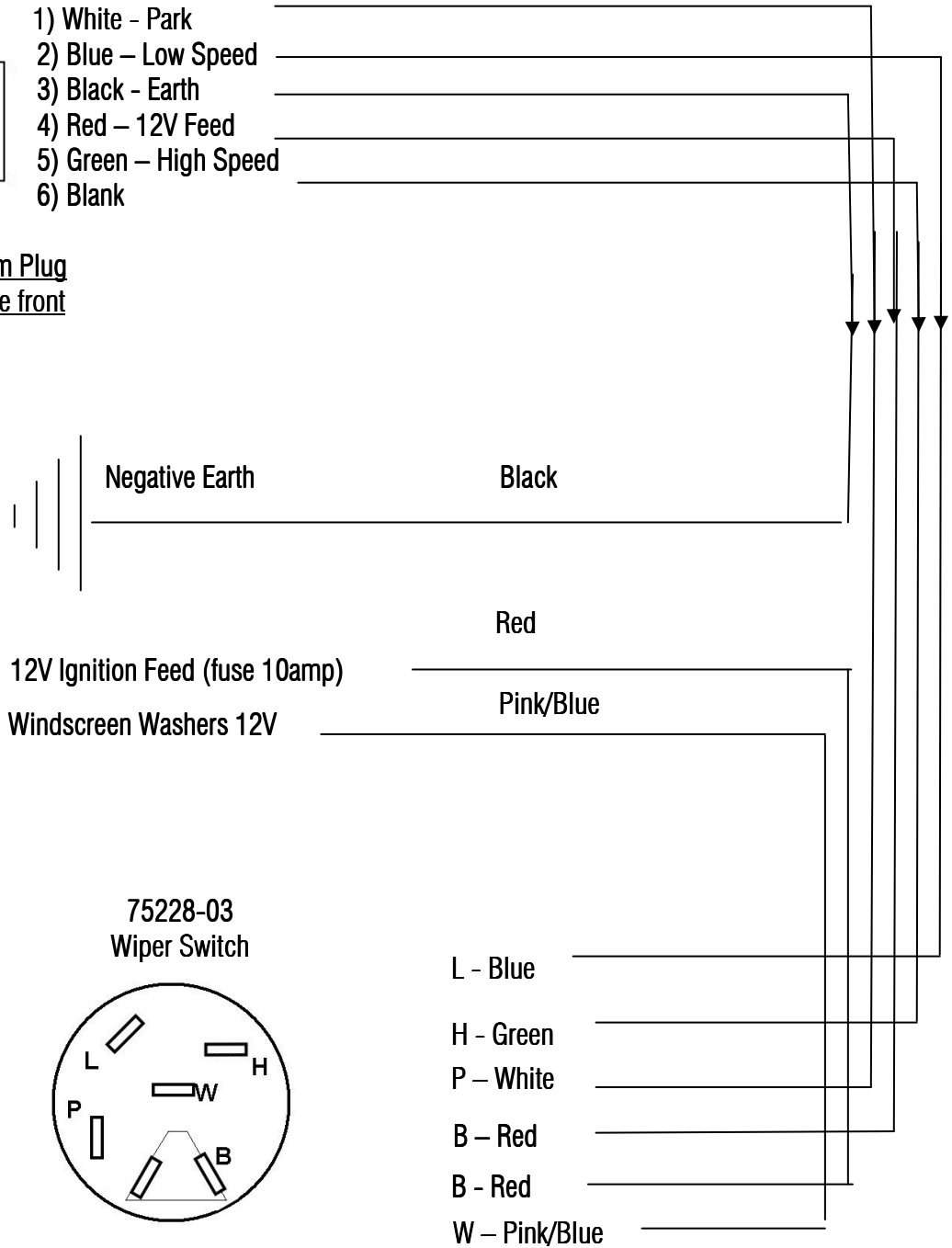
Pyrenees Hwy Chewton, VIC. 3450
Telephone : (03) 5472 1442 - Fax (03) 5472 4111

WIPER MOTOR LOOM PINOUTS



- 1) White - Park
- 2) Blue - Low Speed
- 3) Black - Earth
- 4) Red - 12V Feed
- 5) Green - High Speed
- 6) Blank

6 Pin Female Loom Plug
As Viewed from the front



Wiper switch system is 12V Positive Feed